



10

< PORTMAN >
SQUARE

LONDON W1

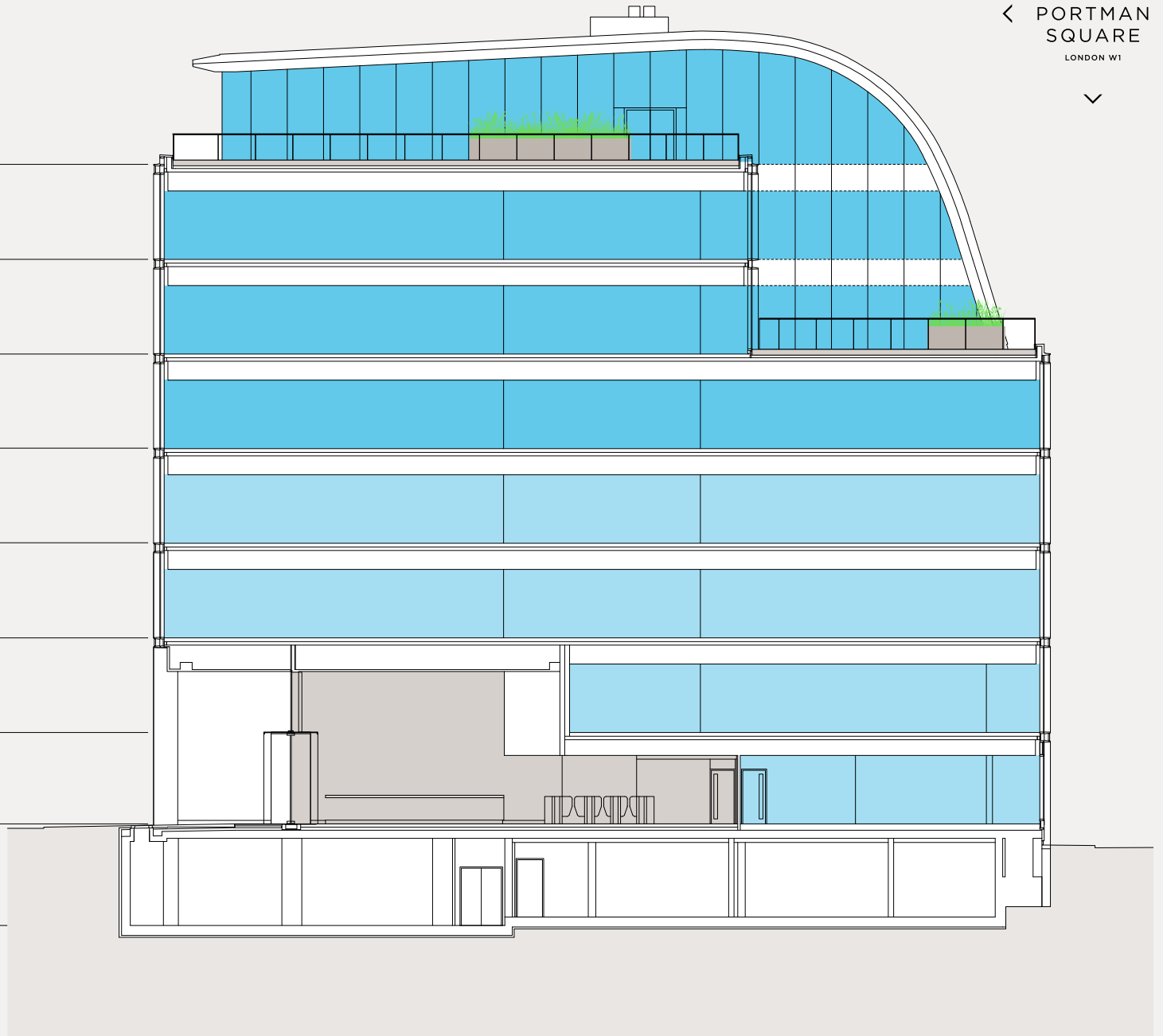


FLOOR PLANS

SCHEDULE OF AREAS

^
 10
 < PORTMAN >
 SQUARE
 LONDON W1
 v

FLOOR	SQ FT	SQ M
7th Floor	Let to Aspect Capital	
6th Floor	Let to Aspect Capital	
5th Floor	Let to Aramco	
4th Floor	Let to Aramco	
3rd Floor	18,534	1,722
2nd Floor	18,535	1,722
1st Floor	16,787	1,560
Ground Floor	1,548	144
TOTAL	55,404	5,148



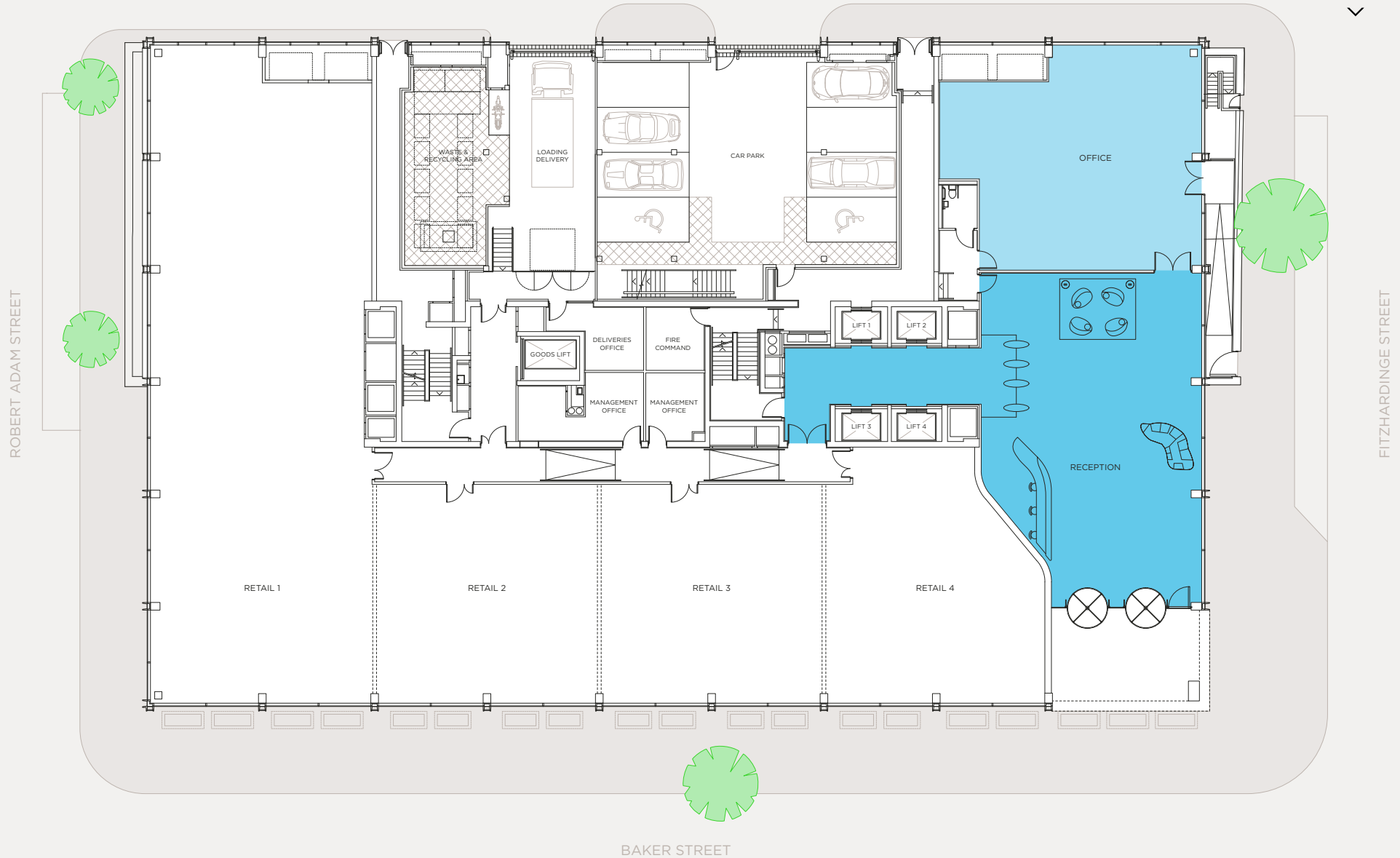
All floor areas are net internal

Plans are indicative and not to scale

GROUND FLOOR

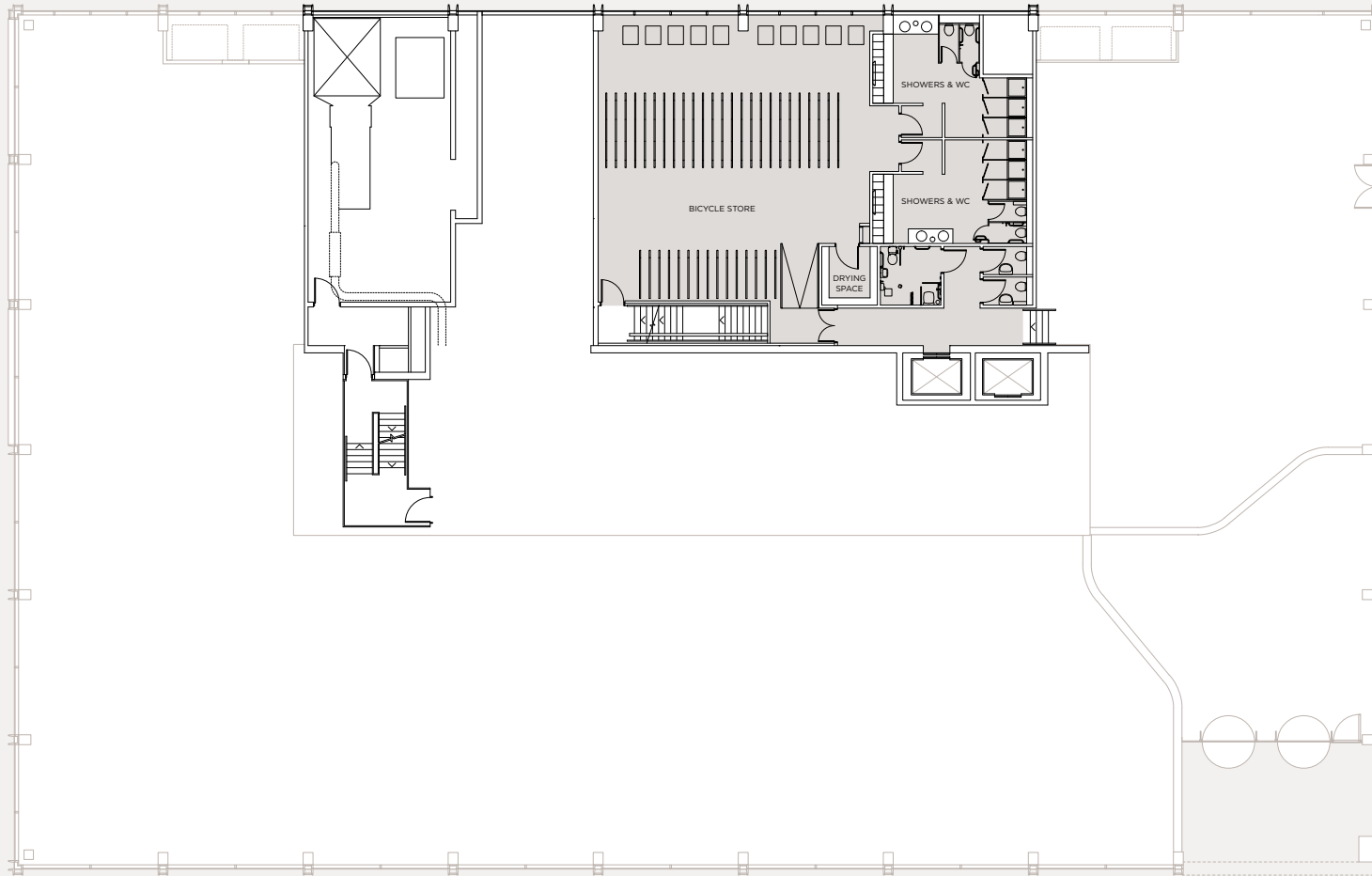
Reception 2,032 sq ft 189 sq m
Office 1,548 sq ft 144 sq m

10
PORTMAN SQUARE
LONDON W1



MEZZANINE

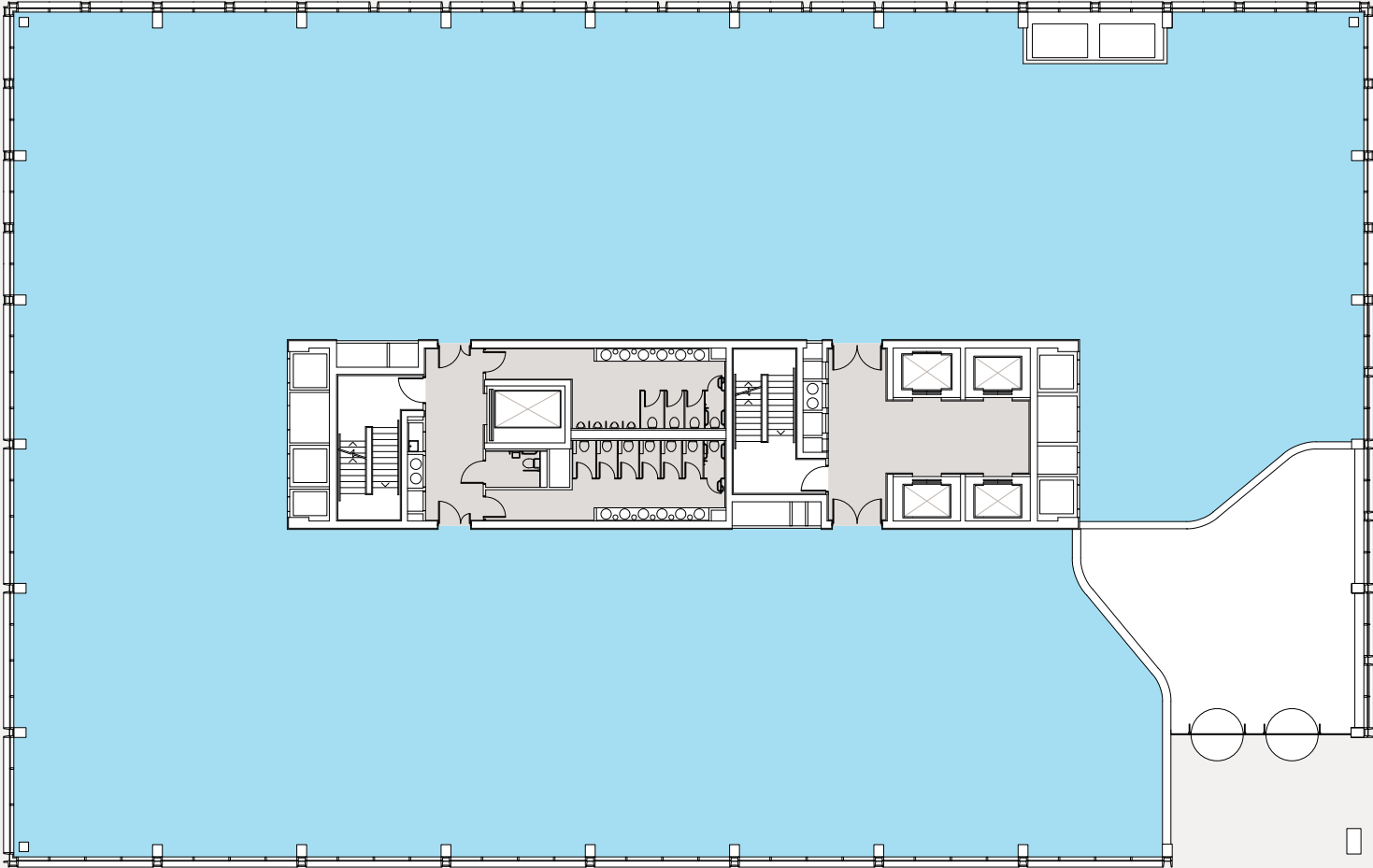
- 124 bicycle spaces
- 7 showers (including a disabled shower)
- Changing rooms
- Drying room



1ST FLOOR

16,787 sq ft 1,560 sq m

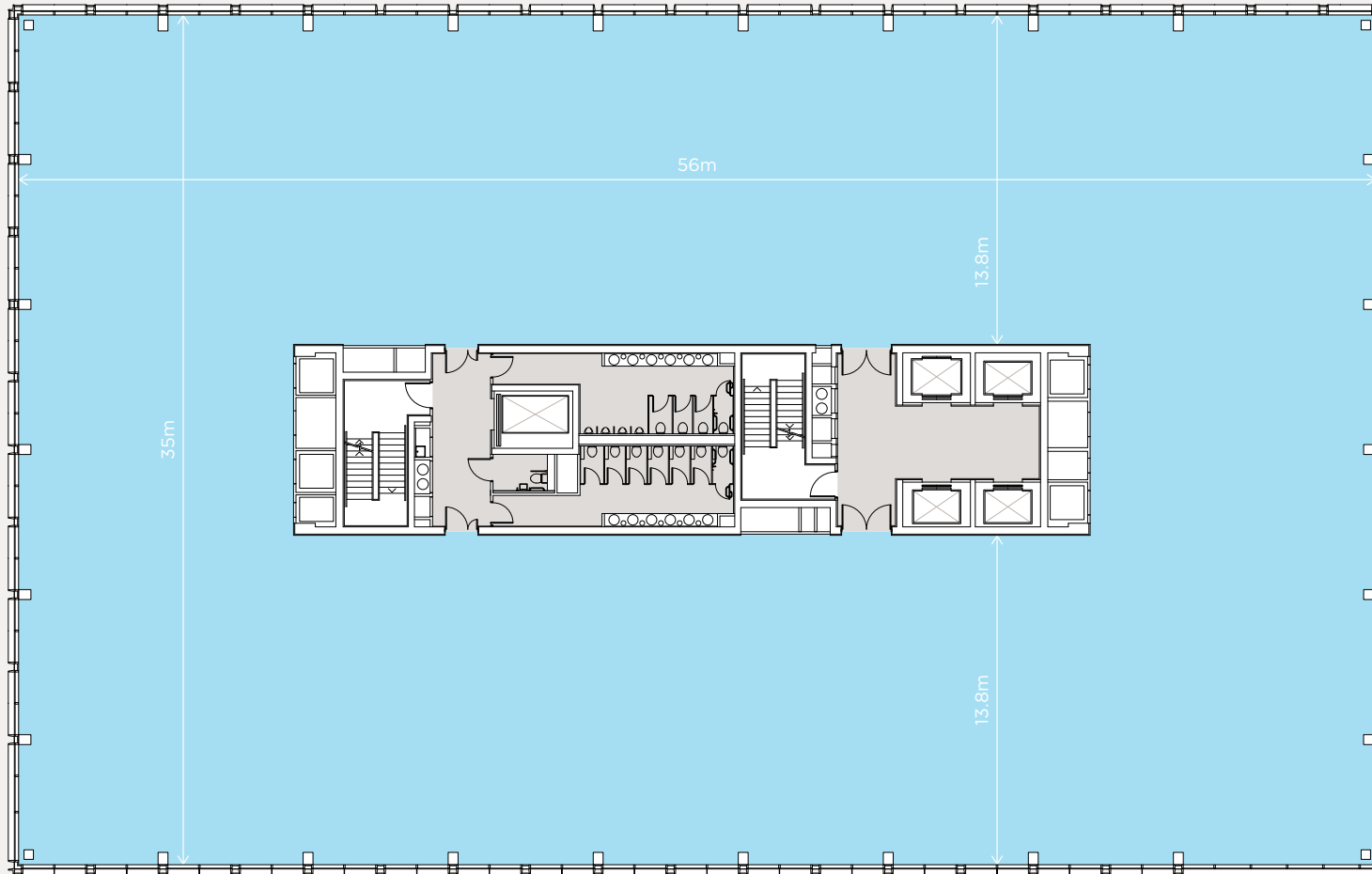
^
10
< PORTMAN SQUARE >
LONDON W1
v



2ND FLOOR

18,535 sq ft 1,722 sq m

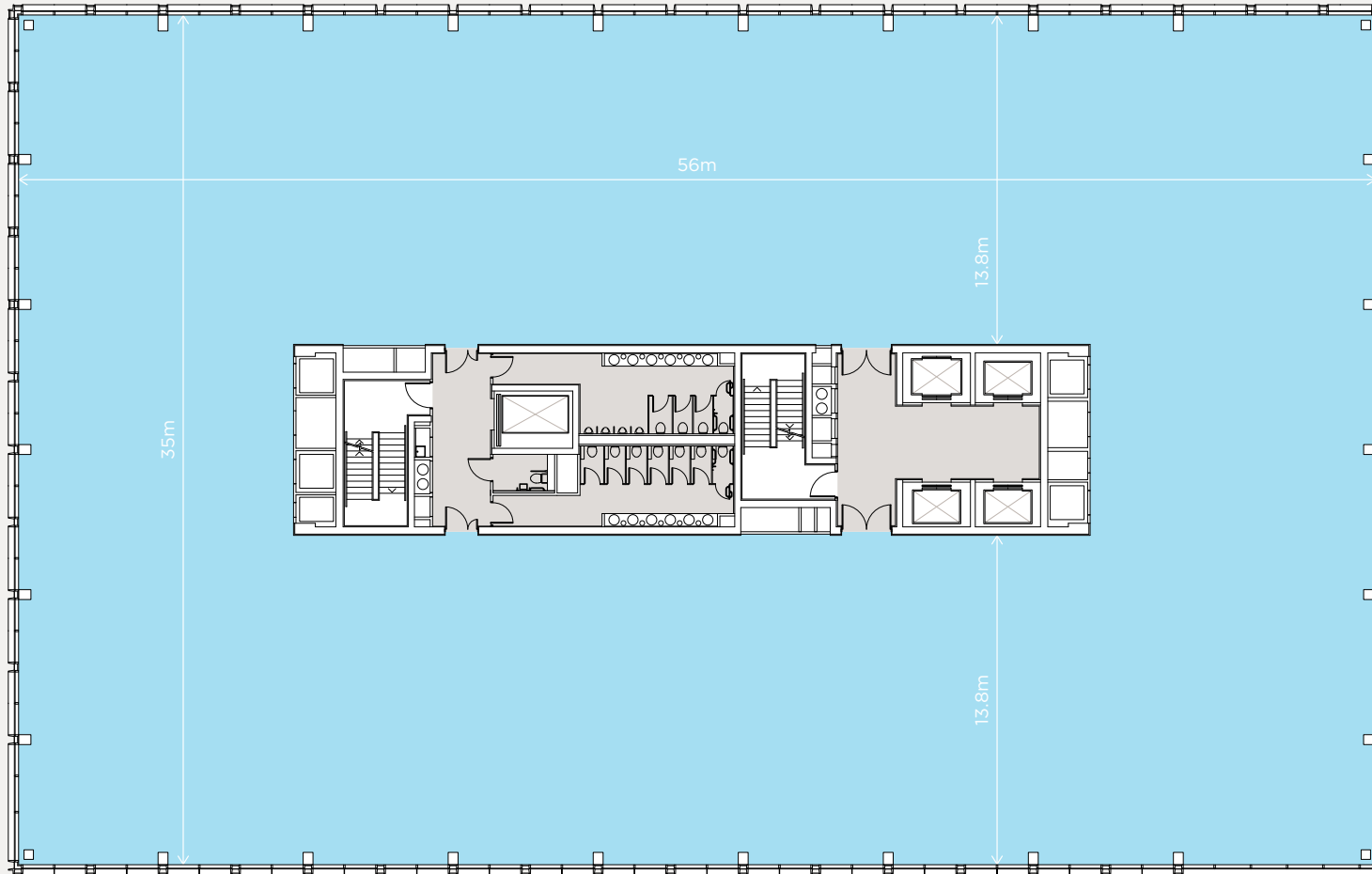
10
PORTMAN
SQUARE
LONDON W1



3RD FLOOR

18,534 sq ft 1,722 sq m

10
PORTMAN
SQUARE
LONDON W1



CONTACT US

British Land

James Danby
james.danby@britishland.com
+44 (0)20 7467 2818
+44 (0)7818 008 989
britishland.com

Jones Lang LaSalle

+44 (0)20 7493 6040

Knight Frank

+44 (0)20 7629 8171

10PORTMANSQUARE.COM

^
10
< PORTMAN >
SQUARE
LONDON W1
v



THE
PORTMAN
ESTATE

The British Land Company PLC and their agents give notice that: these particulars are set out as a general outline only, for the guidance of intending purchasers or lessees and do not constitute, nor constitute part of, an offer or contract; all descriptions, dimensions, references to condition and necessary permission for use in occupation and other details are given without responsibility, and any intending purchasers or tenants should not rely on them as statements or representations of fact, but must satisfy themselves by inspection or otherwise as to the correctness of each of them. All floor areas and measurements are approximate. July 2013.