



10

< PORTMAN >  
SQUARE

LONDON W1



SPACE PLANS

# OPEN PLAN

Based on layout of 2<sup>ND</sup> - 3<sup>RD</sup> floors  
18,534 sq ft 1,722 sq m

## Workspace allocation

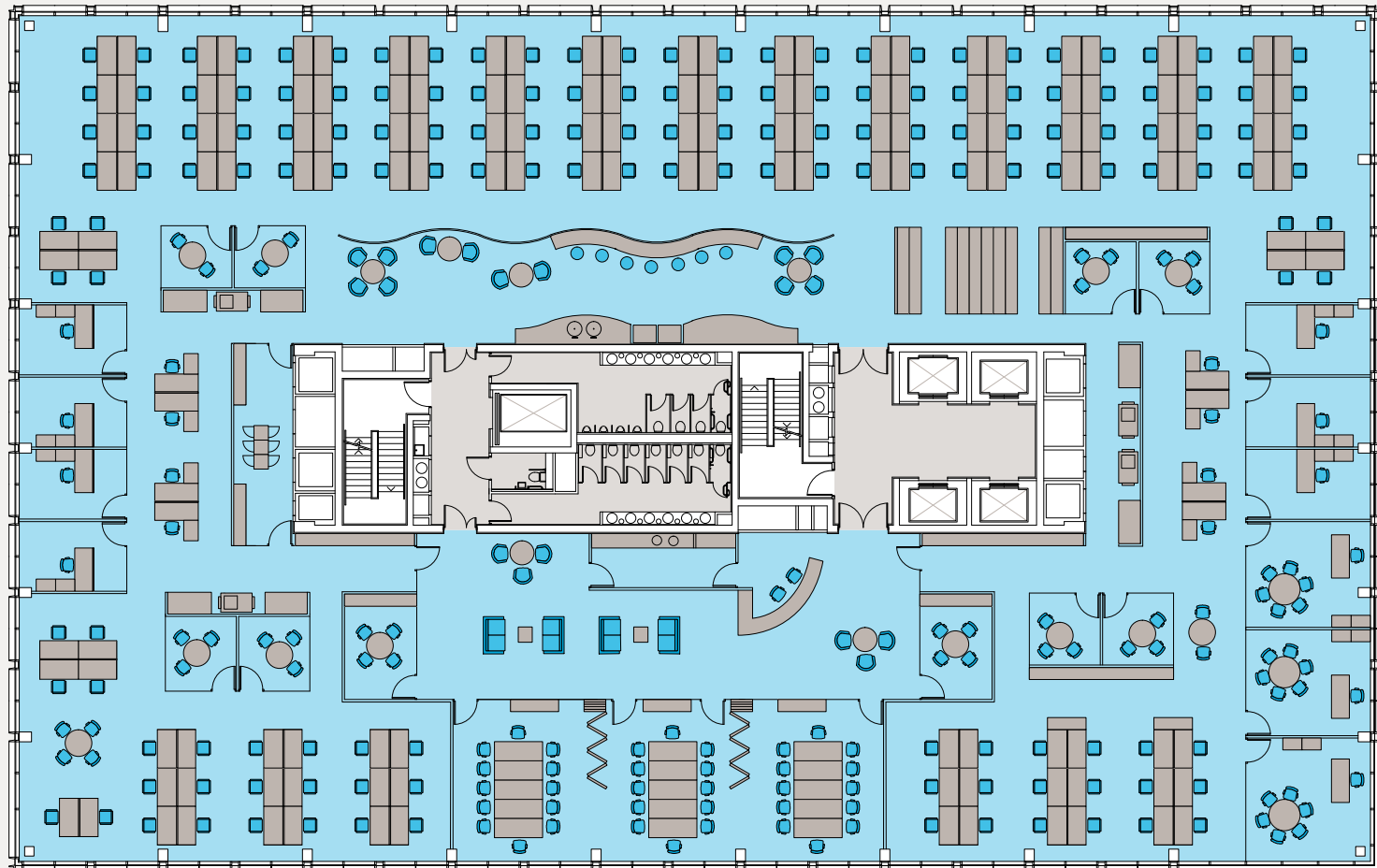
- > 10 in cellular offices
- > 162 open plan workspaces
- > 172 people total

## Density

- > 108 sq ft per person
- > 10 sq m per person

## Facilities

- > Reception area
- > 3 x 12 person meeting rooms
- > 2 x 4 person meeting rooms
- > 8 quiet/small meeting rooms
- > Reception kitchenette
- > Kitchen/break out area
- > 3 copy points
- > Comms/store room
- > Rolling storage area



# CELLULAR SINGLE PERSON OFFICES

Based on layout of 2<sup>ND</sup> - 3<sup>RD</sup> floors  
18,534 sq ft 1,722 sq m

## Workspace allocation

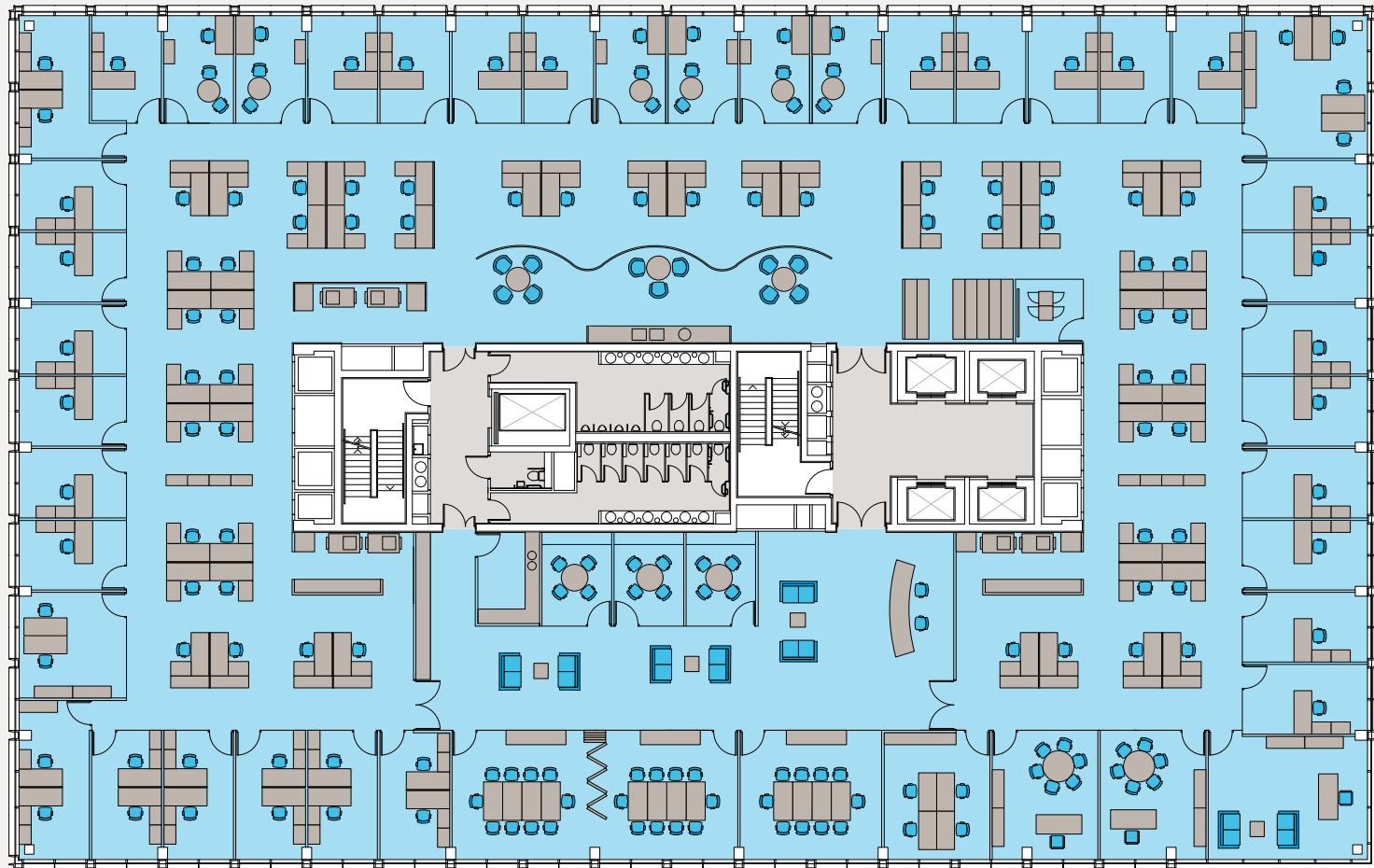
- > 55 in cellular offices
- > 54 open plan workspaces
- > 109 people total

## Density

- > 170 sq ft per person
- > 15.8 sq m per person

## Facilities

- > Reception area
- > 3 x 10 person meeting rooms
- > 3 x 4 person meeting rooms
- > Reception kitchenette
- > Kitchen/break out area
- > 3 copy points
- > Comms room
- > Rolling storage area



# CELLULAR TWO PERSON OFFICES

Based on layout of 2<sup>ND</sup> - 3<sup>RD</sup> floors  
18,534 sq ft 1,722 sq m

## Workspace allocation

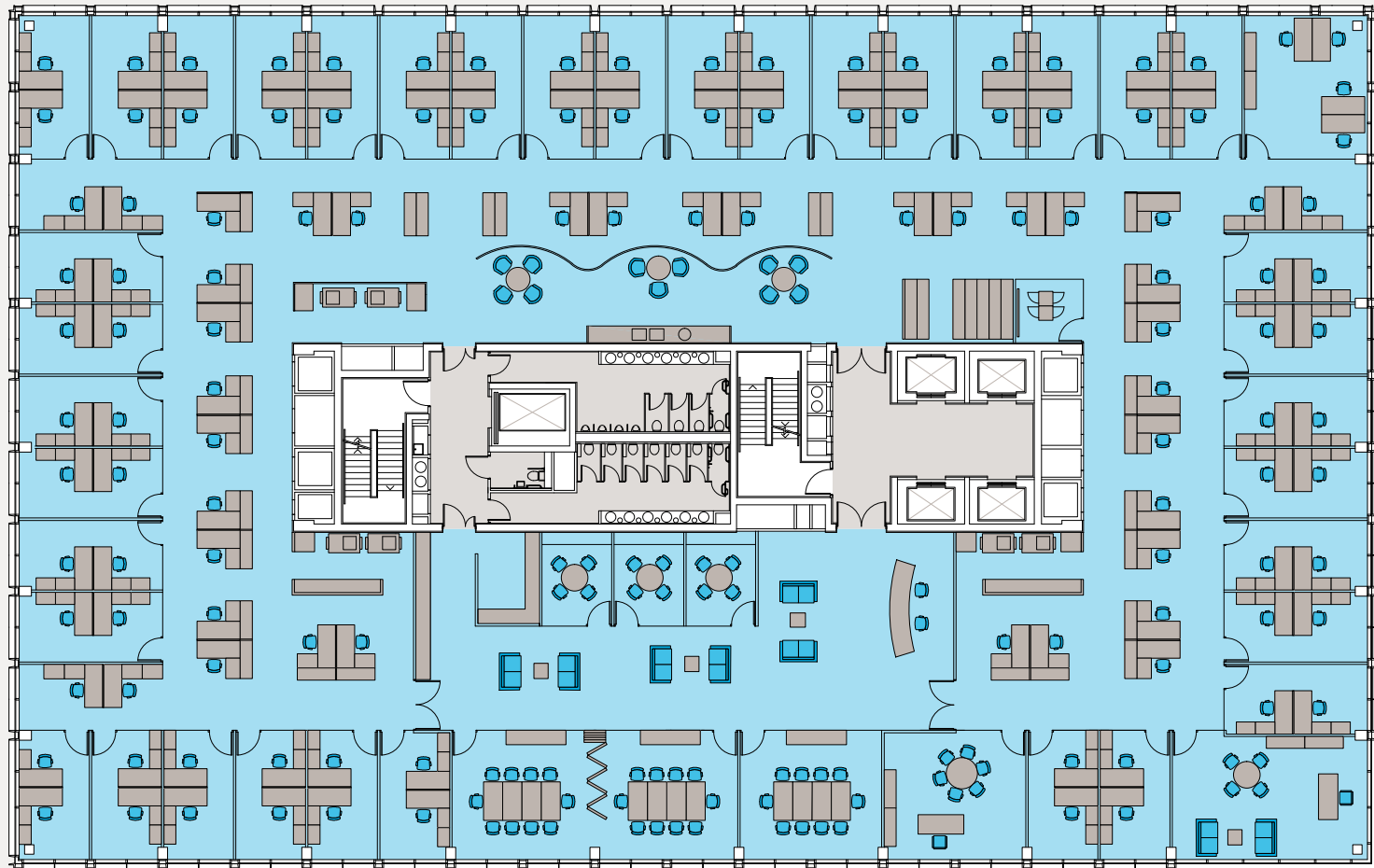
- > 82 in cellular offices
- > 38 open plan workplaces
- > 120 people total

## Density

- > 154 sq ft per person
- > 14.3 sq m per person

## Facilities

- > Reception area
- > 3 x 10 person meeting rooms
- > 3 x 4 person meeting rooms
- > Reception kitchenette
- > Kitchen/break out area
- > 3 copy points
- > Comms room
- > Rolling storage area



# MIXED OPEN & CELLULAR PLAN

Based on layout of 2<sup>ND</sup> - 3<sup>RD</sup> floors  
18,534 sq ft 1,722 sq m

## Workspace allocation

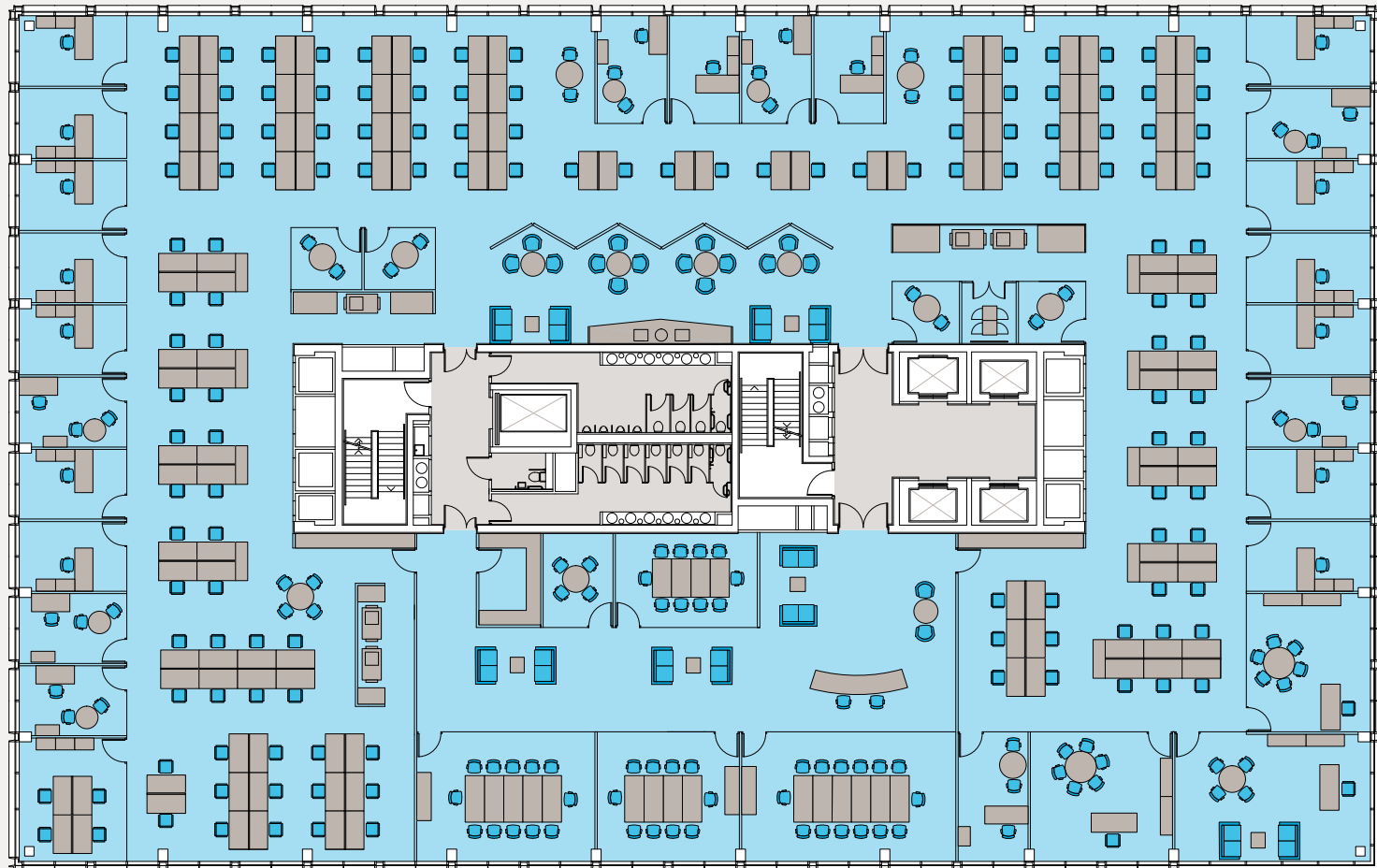
- > 30 in cellular offices
- > 130 open plan workspaces
- > 160 people total

## Density

- > 116 sq ft per person
- > 10.7 sq m per person

## Facilities

- > Reception area
- > 1 x 14 person meeting room
- > 1 x 12 person meeting room
- > 2 x 10 person meeting rooms
- > 1 x 4 person meeting room
- > 4 quiet/small meeting rooms
- > Reception kitchenette
- > Kitchen/break out area
- > 3 copy points
- > Comms room



# CONTACT US

## British Land

James Danby  
james.danby@britishland.com  
+44 (0)20 7467 2818  
+44 (0)7818 008 989  
britishland.com

## Jones Lang LaSalle

+44 (0)20 7493 6040

## Knight Frank

+44 (0)20 7629 8171

[10PORTMANSQUARE.COM](http://10PORTMANSQUARE.COM)

^  
10  
< PORTMAN >  
SQUARE  
LONDON W1  
v



THE  
PORTMAN  
ESTATE

The British Land Company PLC and their agents give notice that: these particulars are set out as a general outline only, for the guidance of intending purchasers or lessees and do not constitute, nor constitute part of, an offer or contract; all descriptions, dimensions, references to condition and necessary permission for use in occupation and other details are given without responsibility, and any intending purchasers or tenants should not rely on them as statements or representations of fact, but must satisfy themselves by inspection or otherwise as to the correctness of each of them. All floor areas and measurements are approximate. July 2013.